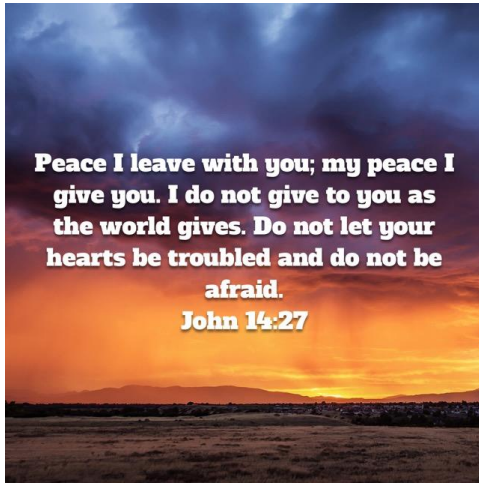




# SHEPHERD'S WATCH CHRISTIAN ACADEMY

Friday Notes..September 29, 2023



**Peace I leave with you; my peace I give you. I do not give to you as the world gives. Do not let your hearts be troubled and do not be afraid.**  
**John 14:27**

## MARK YOUR CALENDAR

Upcoming Events..

**Tues. Oct. 3 - NO SCHOOL**

Wed. Oct. 4 - Walk to School Day  
Chapel at 8:10am  
Art of Parenting 6pm

Oct 8 - 14 Fire Prevention Week

Wed. Oct. 11 - Fire Dept. Visit

Fri. Oct 13 - Grandparents Day  
Chapel at 8:10am

Mon. Oct. 16 - Field Trip!

Wed. Oct. 25 - Chapel at 8:10am

**Thur/Fr. Oct. 26-27 NO SCHOOL**

Mon. Oct. 30 Noah's Ark Day  
*Calendar may also be seen on our website*

[www.shepherdswatchca.org](http://www.shepherdswatchca.org)

**Thank you to everyone who came out and supported our Shepherd's Watch Christian Academy fundraiser this past weekend! It was a success!**

Wed. MENU  
Ravioli  
Salad  
Fruit

**NO SCHOOL  
TUESDAY  
OCT. 3**

## Principal's Page

**How can Shepherd's Watch Christian Academy students serve God at school, home and play? Here is an A-Z list:**

**A**sk God in Prayer; **B**e kind; **C**are for others; **D**o homework; **E**njoy going outside to play; **F**orgive; **B**e **G**ood; **H**ugs; **I**nvite others to church; **S**pread **J**oy; **F**ly **K**ites; **L**ove your mom, dad, brothers, sisters, family; **M**ake a card; **B**e **N**ice to everyone; **O**pen your heart; **P**raise God, **P**ray; **Q**uietly walk through the halls; **R**ake leaves; **S**ing, **S**hare; **T**ake turns; **U**nderstand; **V**olunteer; **W**ait your turn; **P**lay a **X**ylophone; **Y**ardwork; **Z**oo; go and enjoy God's creation!

**Blessings, Mr. Schmidt**

**National Walk to school day is Oct 4th.**

SWCA uses the opportunity to make students aware of the location they are to run to if there is an evacuation of the school building. Parents are asked to drop their children off at the Rose Mary Manor Assisted Living here in Mattoon. While there we will have a short devotion and then we will walk back to SWCA. After the short devotion, a County Police car will lead the students back to the School. Parents are welcome to join their child as we walk to school.

**Please Flip,  
Read the  
back.**

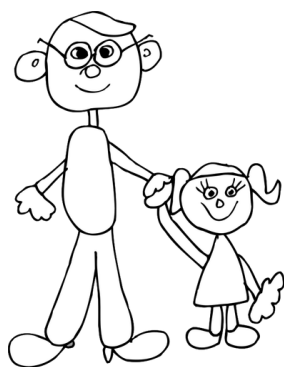
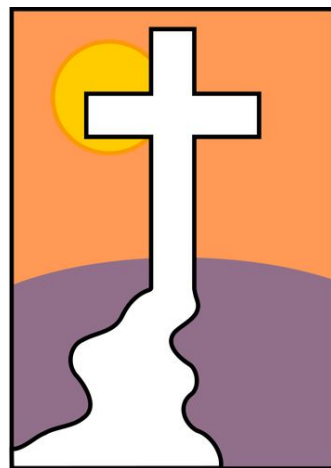
**MISSION STATEMENT:** Our mission at Shepherd's Watch Christian Academy is - To provide a caring, creative, structured environment in which students are challenged to grow spiritually, academically, socially, emotionally, physically, and relationally through individual and group learning experiences.

*This institution is an equal opportunity provider.*

# October 13

## Grandparents Day Schedule

7:30-8am	Arrival
8-8:30am	Chapel
8:30am	Visit student classrooms various activities
9:30am	Snack
9:45am	Recess with Grandparents
10:15am	Return to classroom for Puzzles, games
11:00am	Lunch Sing Released for the day with grandparents



Our Chapel donations will be sent to Samaritan's Purse for the Maui, Hawaii Wildfires relief. We continue to keep Hawaii's people and their rebuilding in our prayers.

**MISSION STATEMENT:** Our mission at Shepherd's Watch Christian Academy is - To provide a caring, creative, structured environment in which students are challenged to grow spiritually, academically, socially, emotionally, physically, and relationally through individual and group learning experiences.

*This institution is an equal opportunity provider.*